

Aviator's Code of Conduct

Preamble:

The Arizona Pilot's Association (APA) and The Recreational Aviation Foundation (RAF) are partnering to advance backcountry aviation in Arizona, and every pilot plays a part in our success. Each of us is an ambassador to the non-flying public, and to the land managers responsible for the airstrips we enjoy. Please do your part by practicing these few rules. We want to be the friendliest and most helpful recreational users these land managers work with!:

Pilots will abide by all State and Federal regulations regarding the use of aircraft.

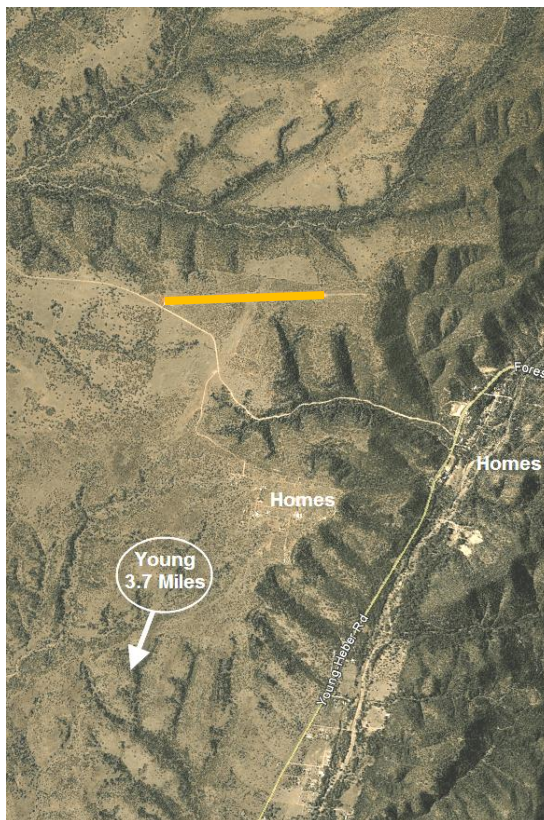
- Act with all possible courtesy to those on the ground who are hunting, horseback riding or observing wildlife, by maintaining reasonable distance and altitude.
- Know wildlife refuge boundaries as well as seasonal areas of wildlife congregation to avoid inadvertent low level over-flights.
- Avoid putting potential stress on wildlife.
- Get appropriate permissions when required, prior to using an airstrip.

Pilots will practice good wilderness and backcountry flying ethics.

- Keep the noise signature of the aircraft to a safe minimum.
- Practice "leave no trace" camping. Fly it in, fly it out.
- Avoid very early morning departures unless safety of flight demands a deviation.
- Be courteous to other users in the area.
- Do not use these airstrips for training purposes or just to say "I've been there."
- Keep the aircraft dean of noxious weed seed to prevent the spread of weeds to backcountry airstrips.
- Participate whenever possible in work events to maintain these airstrips.

Honor the Land Manager's Vision and Rules for the Airstrip

Many hours of negotiations and work go into each backcountry airstrip and trust is earned through fulfilling our commitments to the land managers. A few rogue pilots can destroy this trust and set our backcountry efforts backwards for years. On the other hand, honoring these agreements can go a long way towards these efforts, and even opening new airstrips, so get to know the vision and rules for each airstrip.



Shades, Fire ring with cooking grate installed at midfield by your APA & RAF. Picnic tables placed by the USFS!

If you value this airstrip, please donate to help us preserve it!

Conditions at Pleasant Valley vary daily and the information contained herein may be inaccurate and must not be used for navigation or aviation decision making!

Pleasant Valley Airstrip Information

24AZ

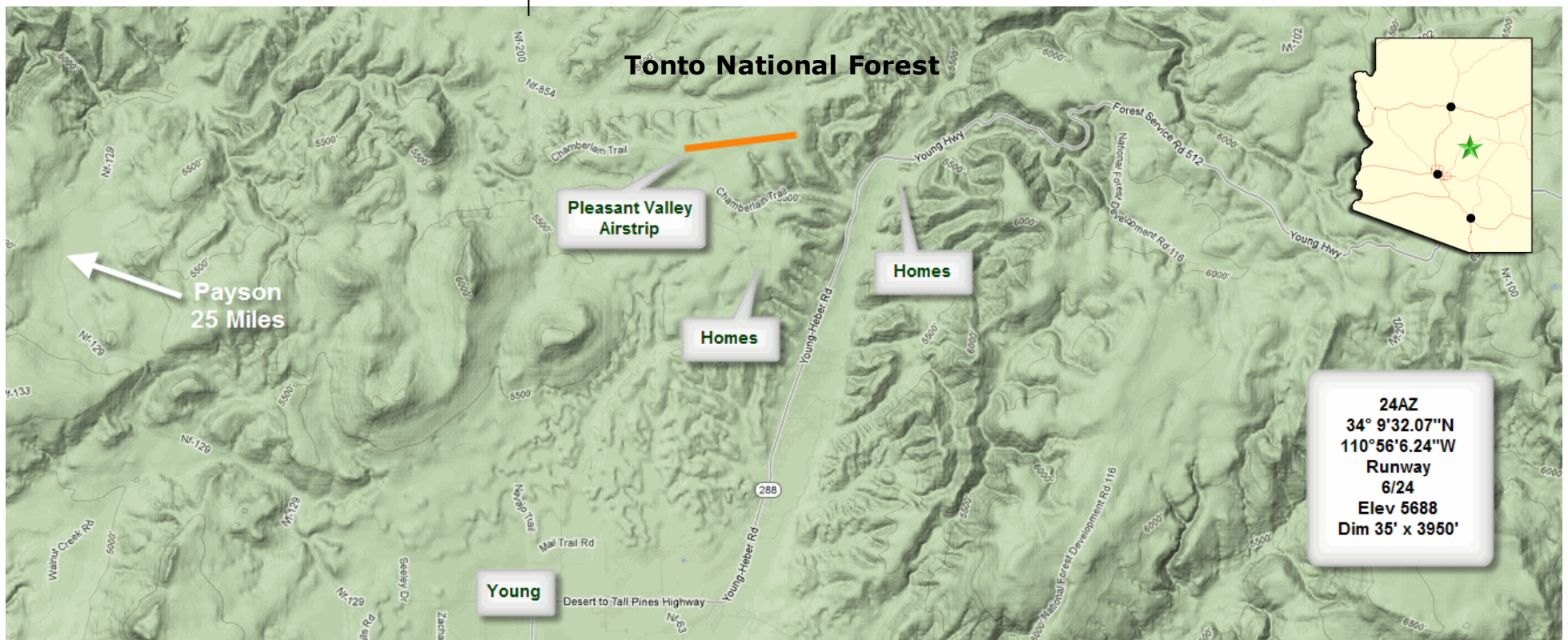
Your Partners in the AZ Backcountry



www.AZPilots.org



www.theRAF.org



Hazards

- Varying surface conditions
- Veering off Rwy may damage aircraft
- 20-35' width with rocks along edges
- Dirt Airstrip, possible ruts / erosion
- Steep slopes off edges at east end
- Crosswinds common
- Potential downdrafts
- 20' Power line 200' East of Rwy
- Wildlife on airstrip

Conditions at Pleasant Valley vary daily and the information contained herein may be inaccurate and must not be used for navigation or aviation decision making!

Pleasant Valley

Located on USFS land, Pleasant Valley District, just north of Young, AZ, nestled within the junipers.

Your AZ Pilots Association & RAF have negotiated the open status of this airstrip!

Group events are arranged each year by the Arizona Pilot's Association and the Recreational Aviation Foundation. These events will be posted at:

- www.AZPilots.org
- www.Facebook.com/AZPilots.org
- www.theRAF.org

Group Events

For APA/RAF Group Events

Temporary CTAF is:
122.9

Pattern is:
LEFT

PLEASE! Avoid flying over homes at higher throttle settings & low altitude!

Parking will be guided by ground crews at group events

Be a good aviation ambassador by practicing the "No Trace" principles, pack in it, pack it out, including trash left by others! Read Aviator's Code of Conduct.